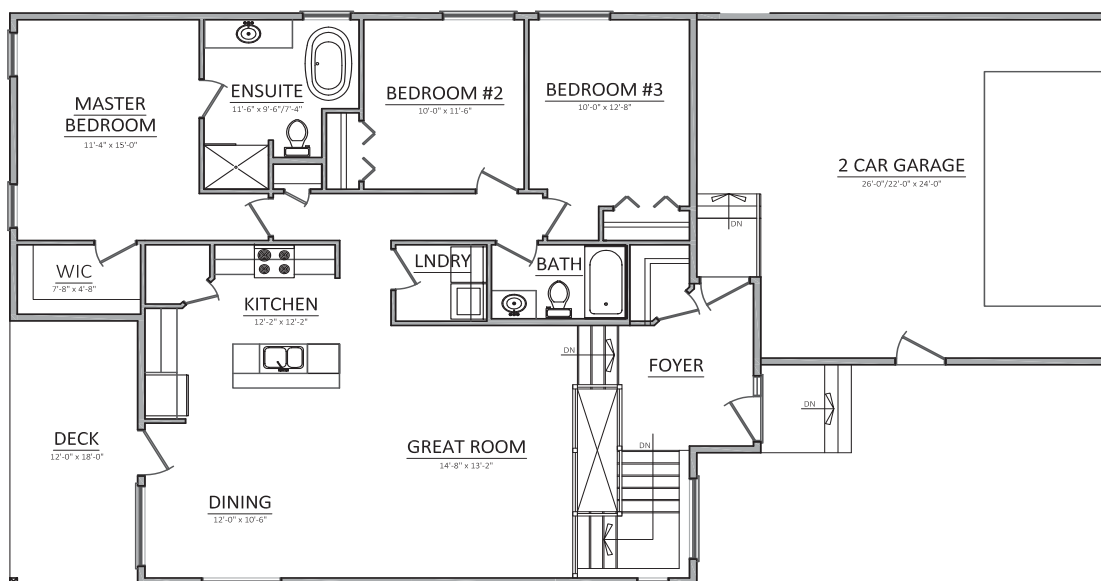
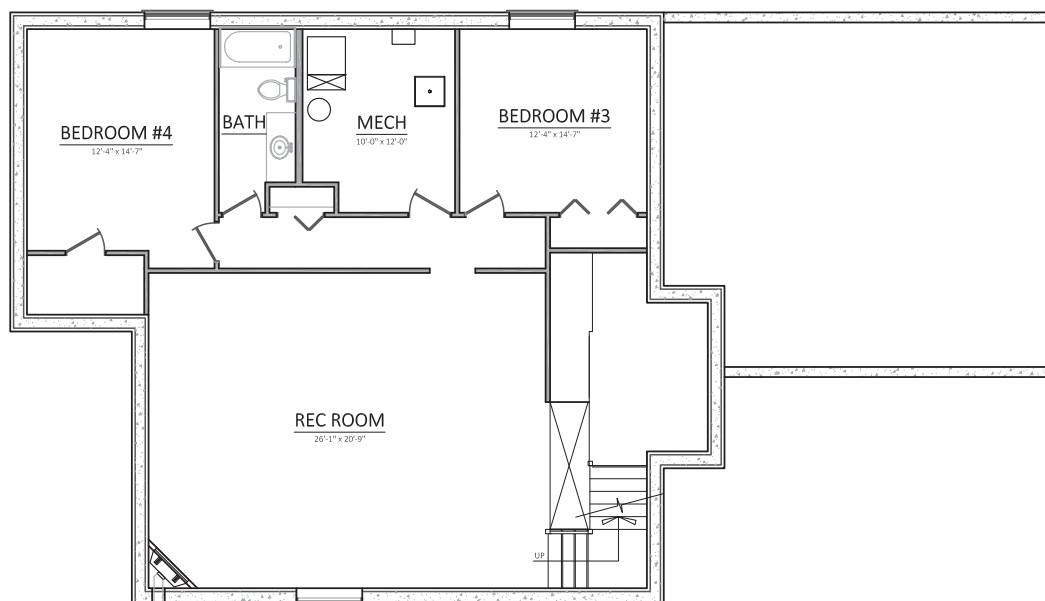


Lot 17 1031 Maplewood Drive



Main Floor
1581 Square Feet



Optional Basement Development

Note: Plans may not be exactly as shown. The builder reserves the right to change plans without notice or obligation.



605A Main Street North, Moose Jaw, SK S6H 0W6
Office: (306) 694-8082 Fax: (306) 694-8079
www.royallepagelandmart.com

Sales Agent:
Morley Munn
Realtor
Cell: (306) 631-5327

