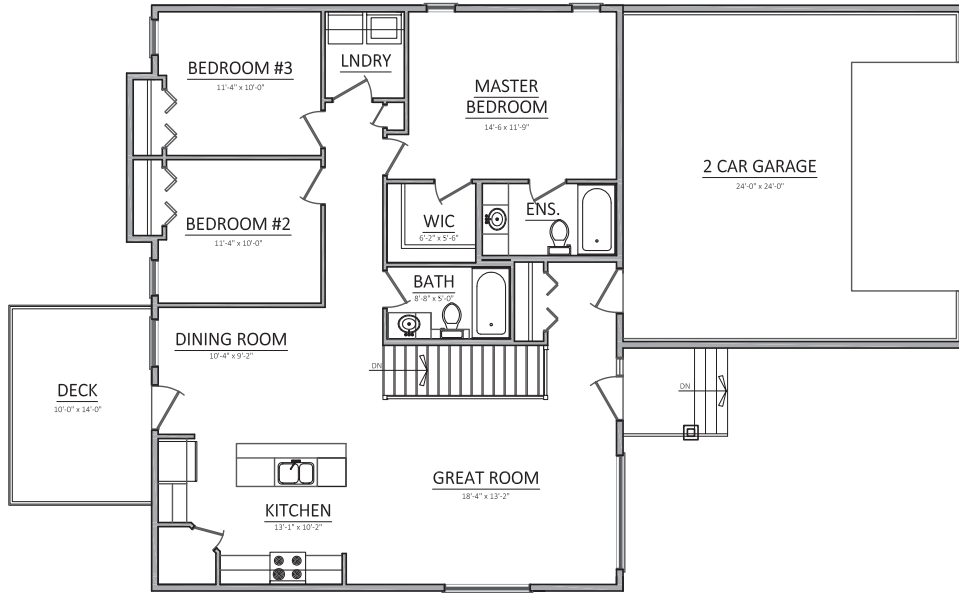
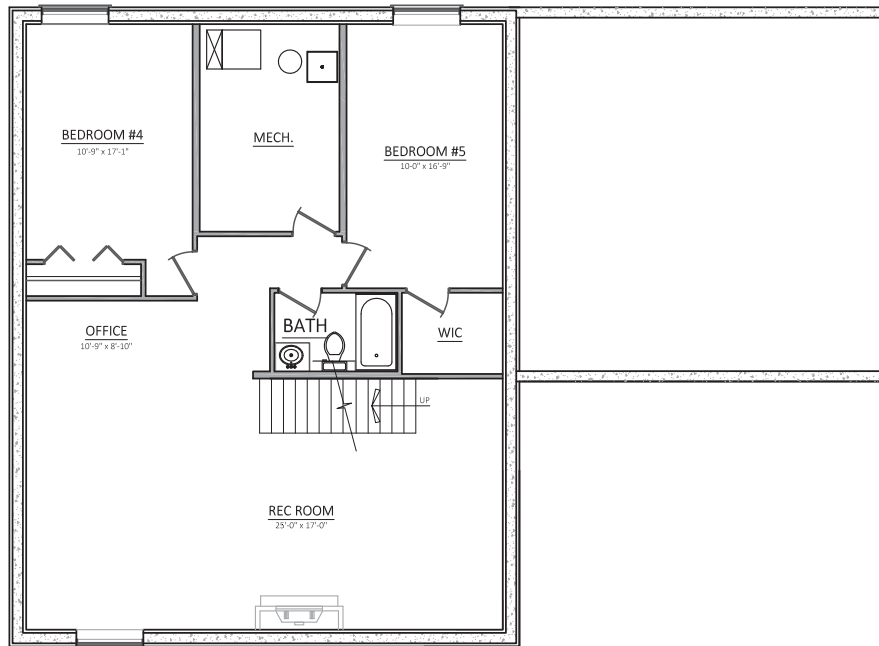


# Lot 21 1007 Maplewood Drive



Main Floor  
1373 Square Feet



## Optional Basement Development

Note: Plans may not be exactly as shown. The builder reserves the right to change plans without notice or obligation.



Sales Agent:  
**Morley Munn**  
Realtor  
Cell: (306) 631-5327

605A Main Street North, Moose Jaw, SK S6H 0W6  
Office: (306) 694-8082 Fax: (306) 694-8079  
www.royallepagelandmart.com

